

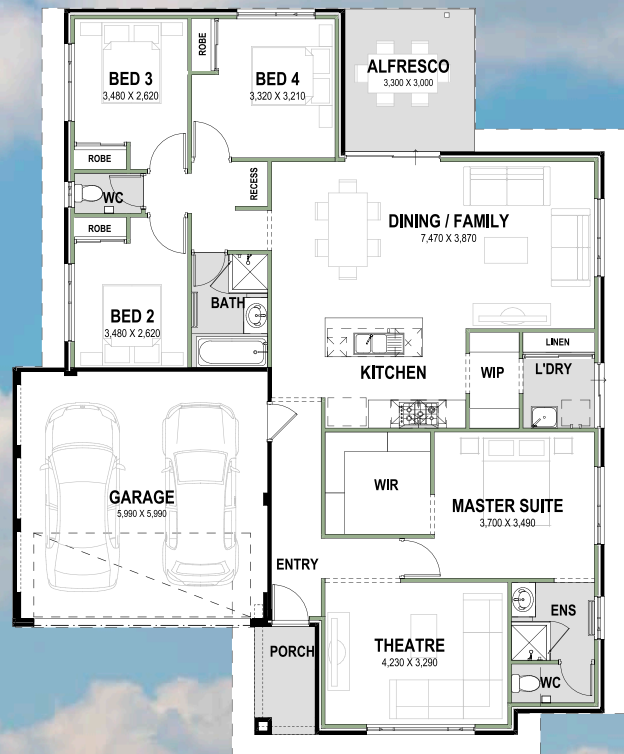
Beyoncé

You will be "Crazy In Love" with this home. It fits a 15 x 20 block and is a great 4 x 2 design. The master and theatre are in one wing of the home towards the front, and the minor bedrooms towards the rear giving parents and kids some privacy without being too far away.

The kitchen is the heart of the home placed in a central location.

Great for not only "All The Single Ladies" but also Single Men and couples too. If you like it "put a ring on it".

4 x 2, theatre
Floor area: 146.68m²
Total area: 195.00m²



Goodlife Homes Specifications

- Feature front elevation with texture coat render
- Plasterboard lined Verticore clay brick walls
- 2 x 600mm stainless steel electric ovens
- 900mm stainless steel gas cooktop and canopy rangehood
- Quality fixtures and fittings throughout the home
- 25 year non-transferable structural guarantee
- 12 months maintenance period
- Direct contact throughout construction with Site Manager
- Interior design consultation



9201 8550

Goodlife
HOMES

goodlifelives.com.au